



Regent Court

North Bank, St John's Wood, NW8 8UW

£550 Per Week

This is an exceptionally large (just over 600 sq/ft!) one double bedroom apartment situated on the raised ground floor of this secure portered building and has the exclusive benefit of having a large pleasant private patio, perfect for BBQ's and Relaxing! The property comprises of, Large entrance hallway with built-in storage, spacious reception/dinning room, with patio doors leading to the secluded private terrace, semi-open plan fitted kitchen, large double bedroom with fitted wardrobes, modern bathroom/WC. The flat benefits from one parking space, 24 hour porter, gym, communal gardens, lots of storage, Only minutes walk from St John's Wood High Street and Regent's Park. Offered Furnished. Available from 21st January for long let only.

- Large One Bedroom
- Ground Floor
- Private Patio
- Secure Parking
- Tons of storage
- Gym
- 24 Hour Porter
- Secure parking

Viewing

Please contact our Messila Residential Office on 020 7586 6699 if you wish to arrange a viewing appointment for this property or require further information.



1



1

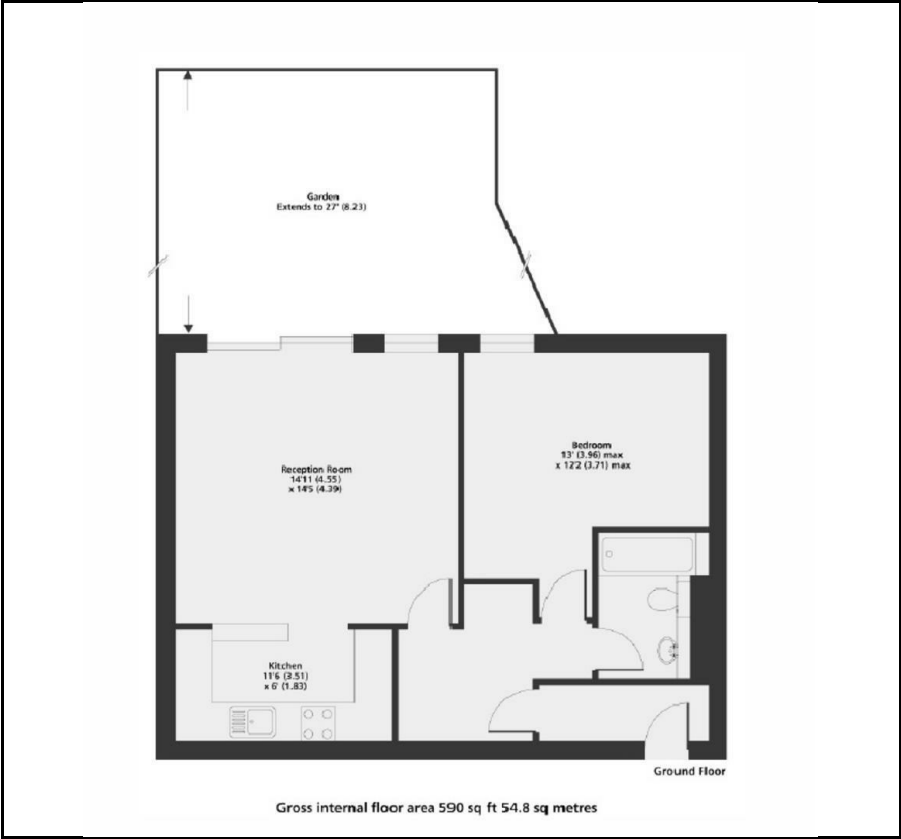


1

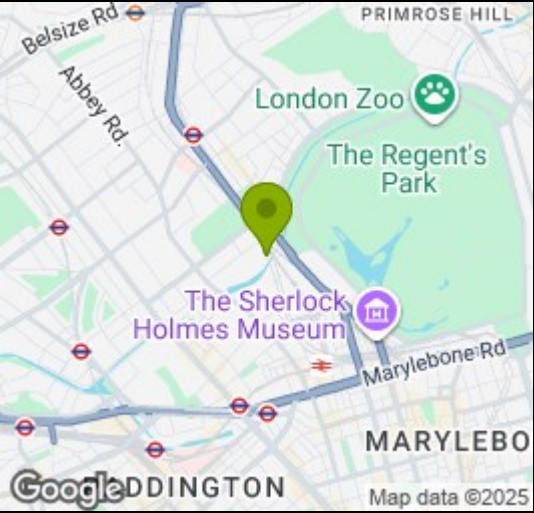


C

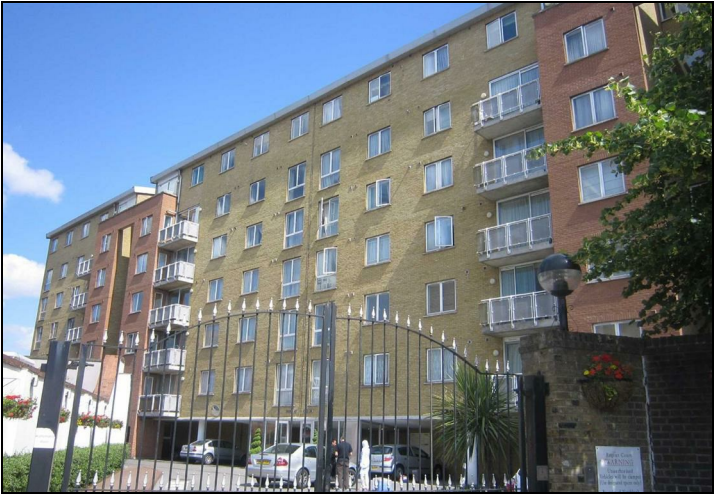
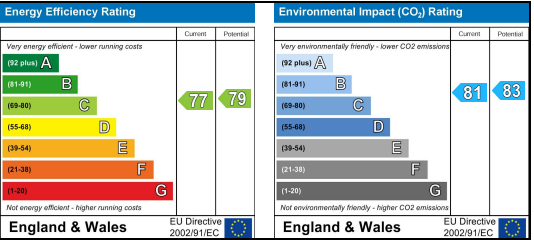
Floor Plan



Area Map



Energy Efficiency Graph



These particulars, whilst believed to be accurate are set out as a general outline only for guidance and do not constitute any part of an offer or contract. Intending purchasers should not rely on them as statements of representation of fact, but must satisfy themselves by inspection or otherwise as to their accuracy. No person in this firms employment has the authority to make or give any representation or warranty in respect of the property.